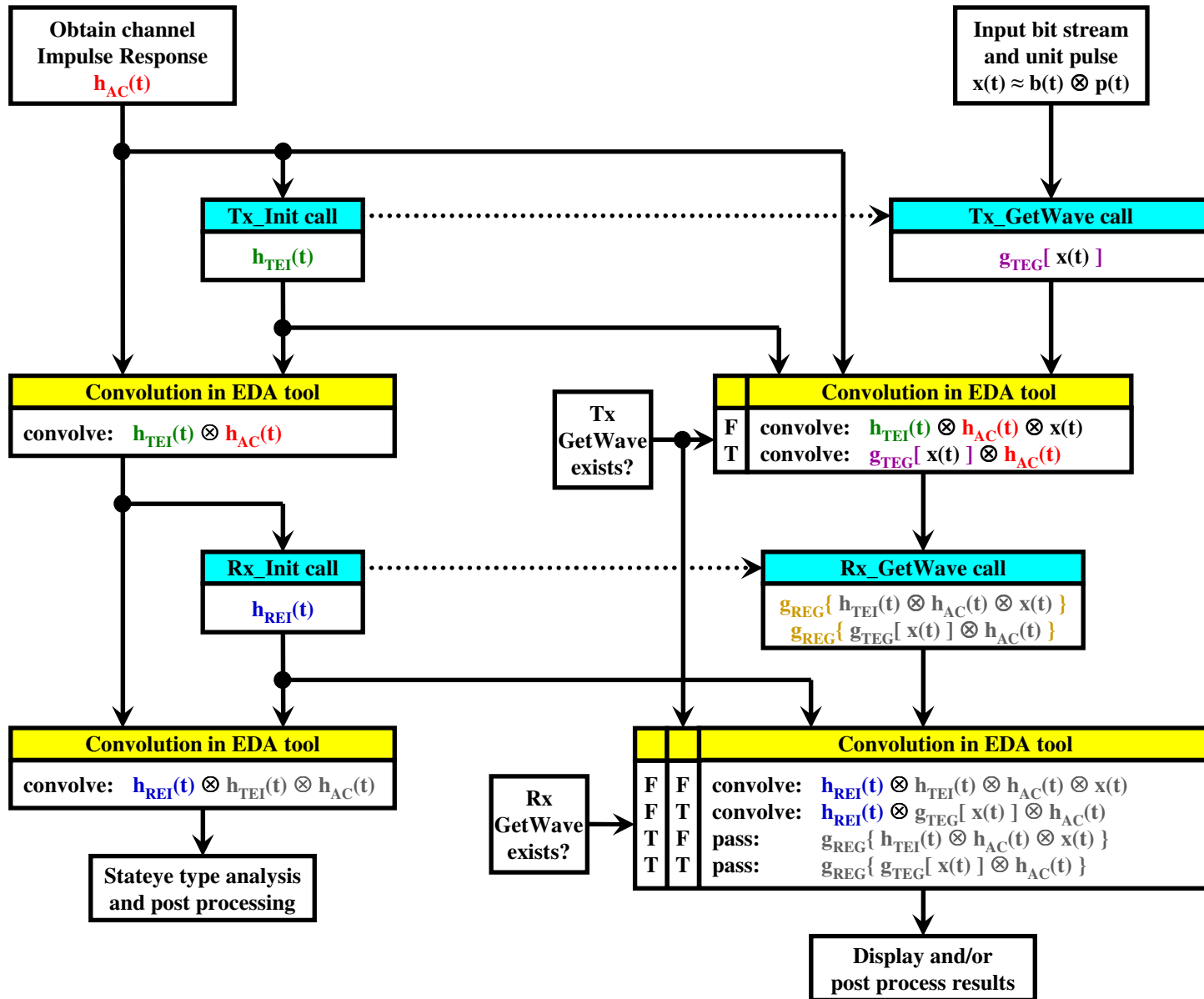
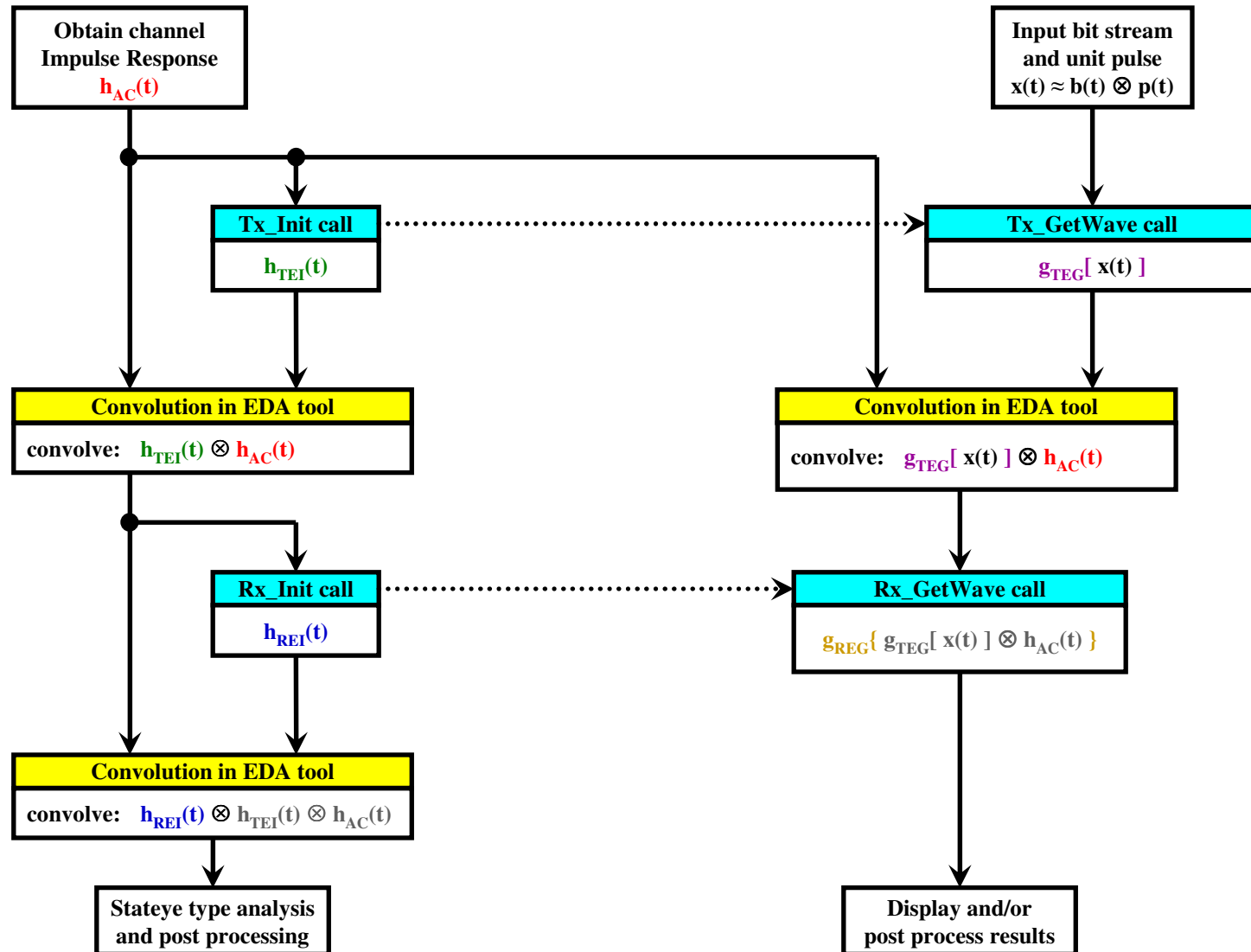


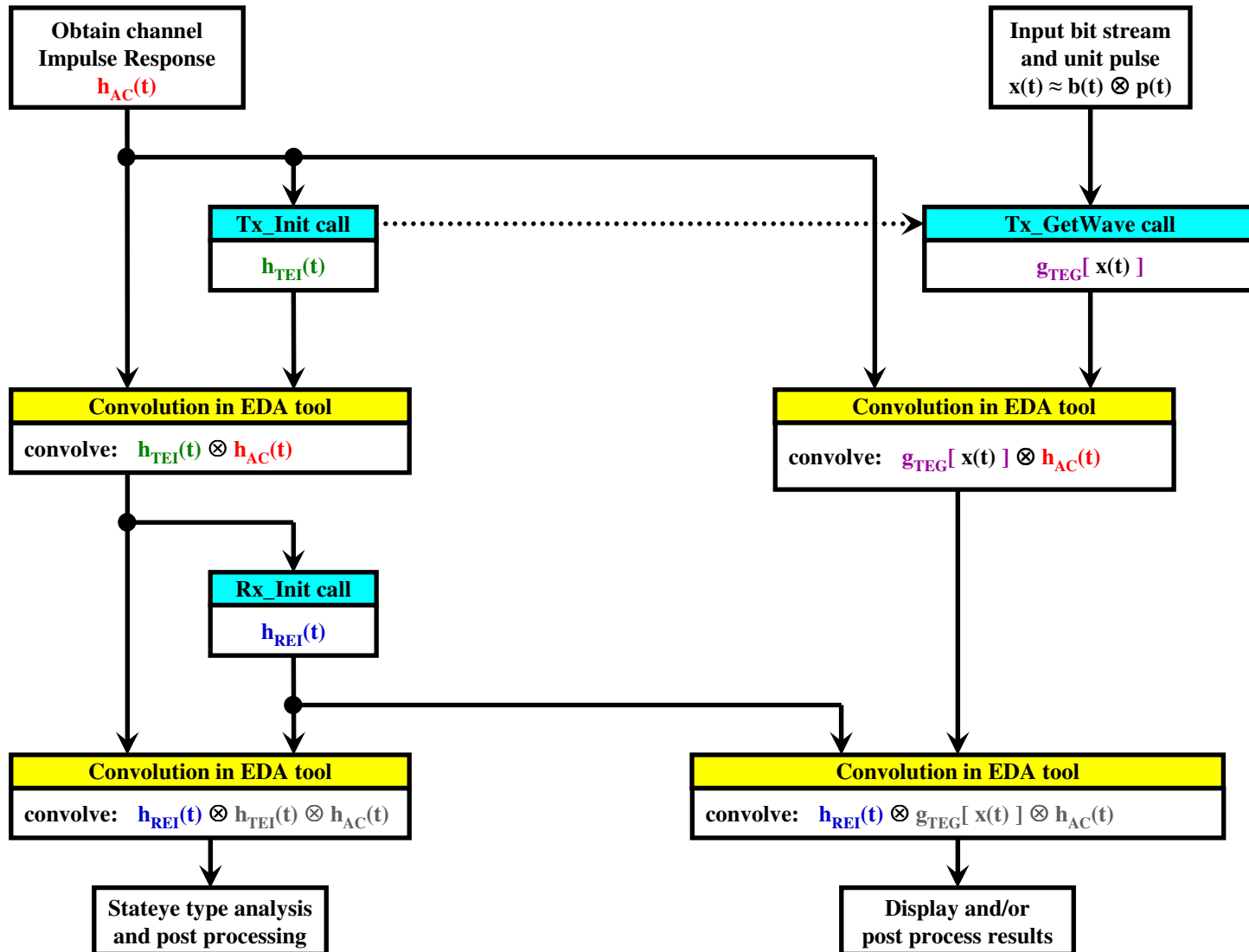
# Arpad's AMI flow based on the 10/6/2009 ATM meeting - all in one



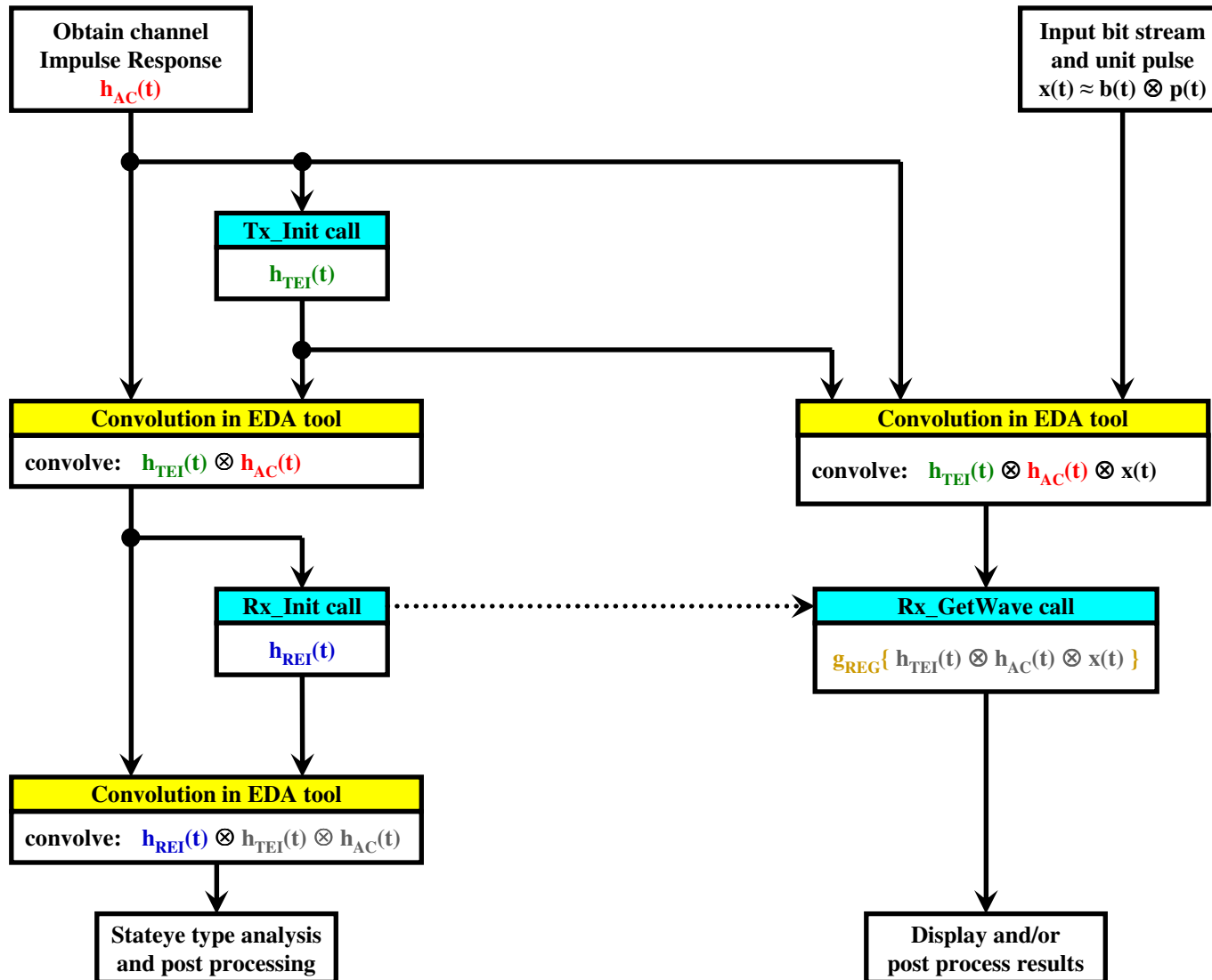
# Arpad's AMI flow based on the 10/6/2009 ATM meeting - both GetWaves exist



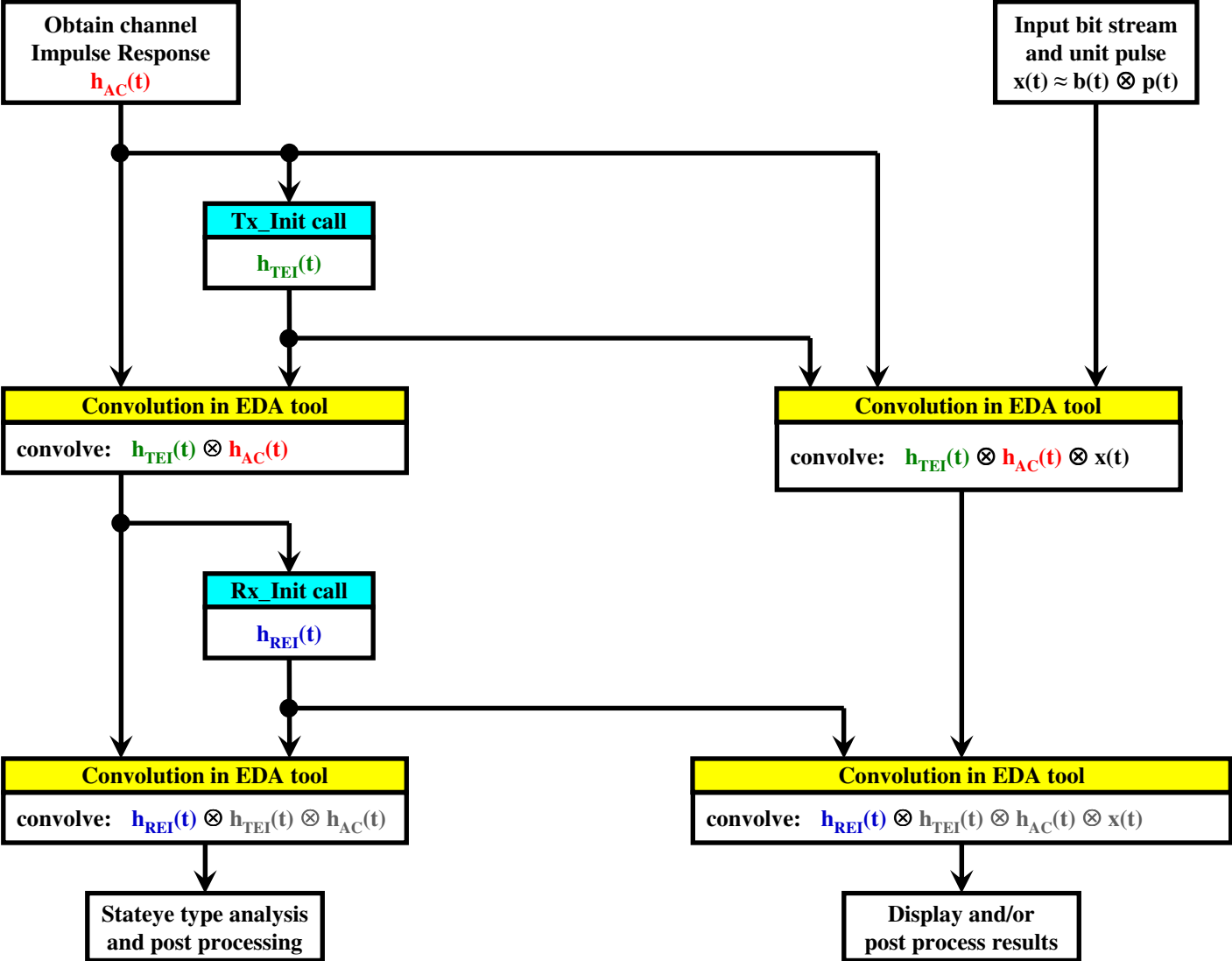
# Arpad's AMI flow based on the 10/6/2009 ATM meeting - Tx\_GetWave only



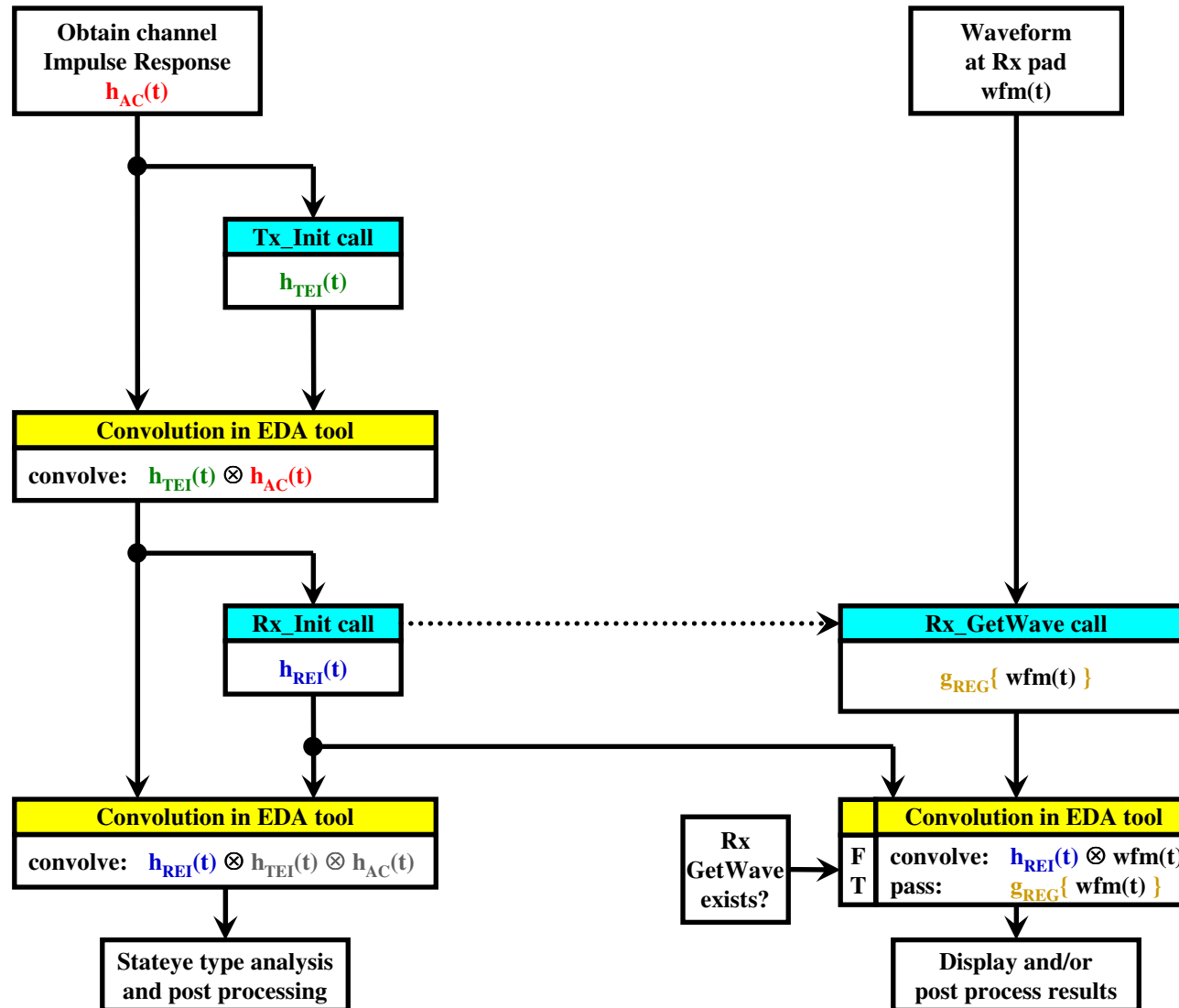
# Arpad's AMI flow based on the 10/6/2009 ATM meeting - Rx\_GetWave only



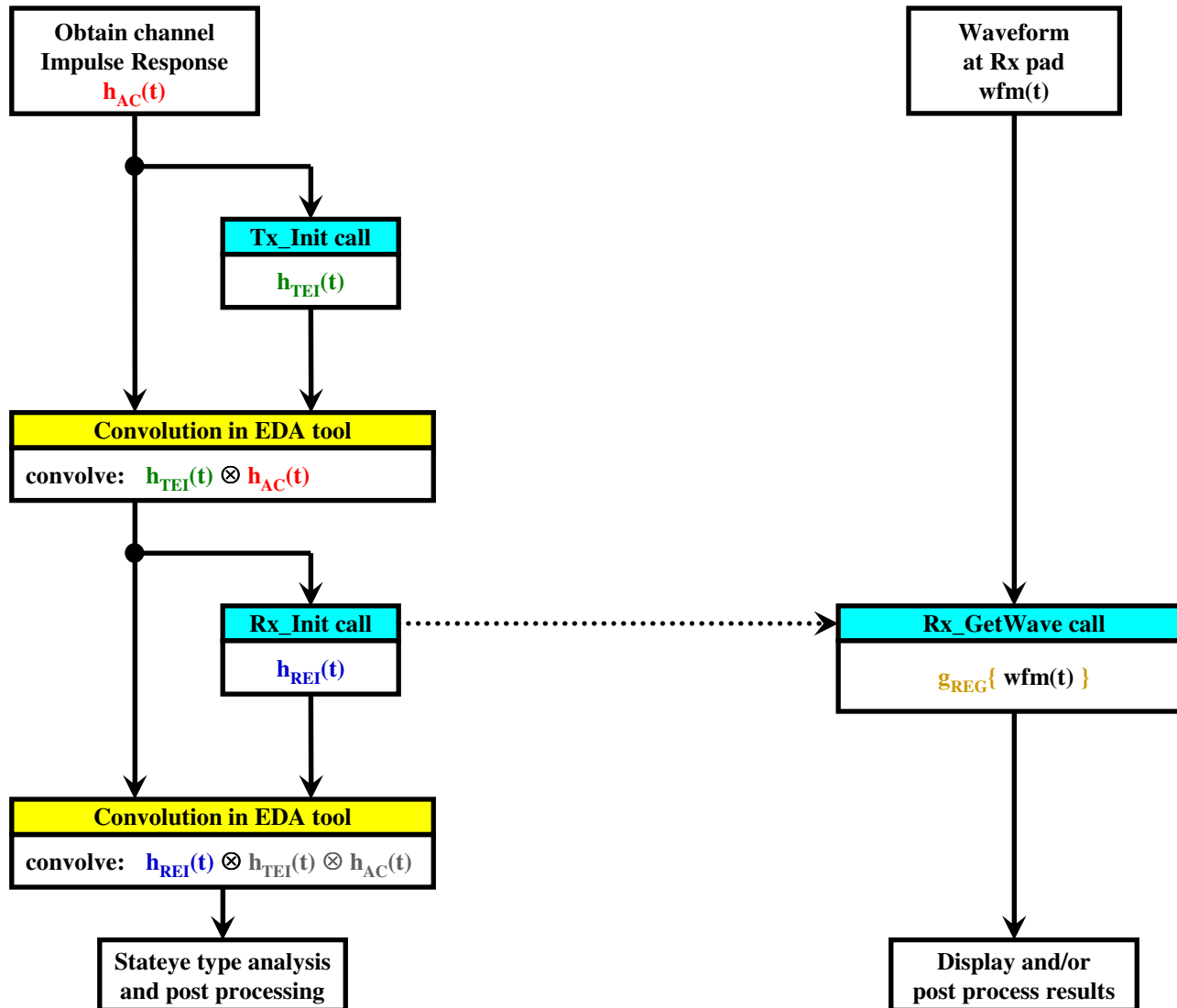
# Arpad's AMI flow based on the 10/6/2009 ATM meeting - no GetWave



# Arpad's AMI flow based on the 10/6/2009 ATM meeting - wfm cases in one



# Arpad's AMI flow based on the 10/6/2009 ATM meeting - wfm with Rx\_GetWave



# Arpad's AMI flow based on the 10/6/2009 ATM meeting - wfm without GetWave

