



JEITA EDA Model Specialty Committee Report

Miyo Kawata
(Chair, EDA Model Specialty Committee)
miyo.kawata@ansys.com

Asian IBIS Summit
Tokyo, Japan
November 12, 2018

EDA Model Specialty Committee, EC Center / JEITA

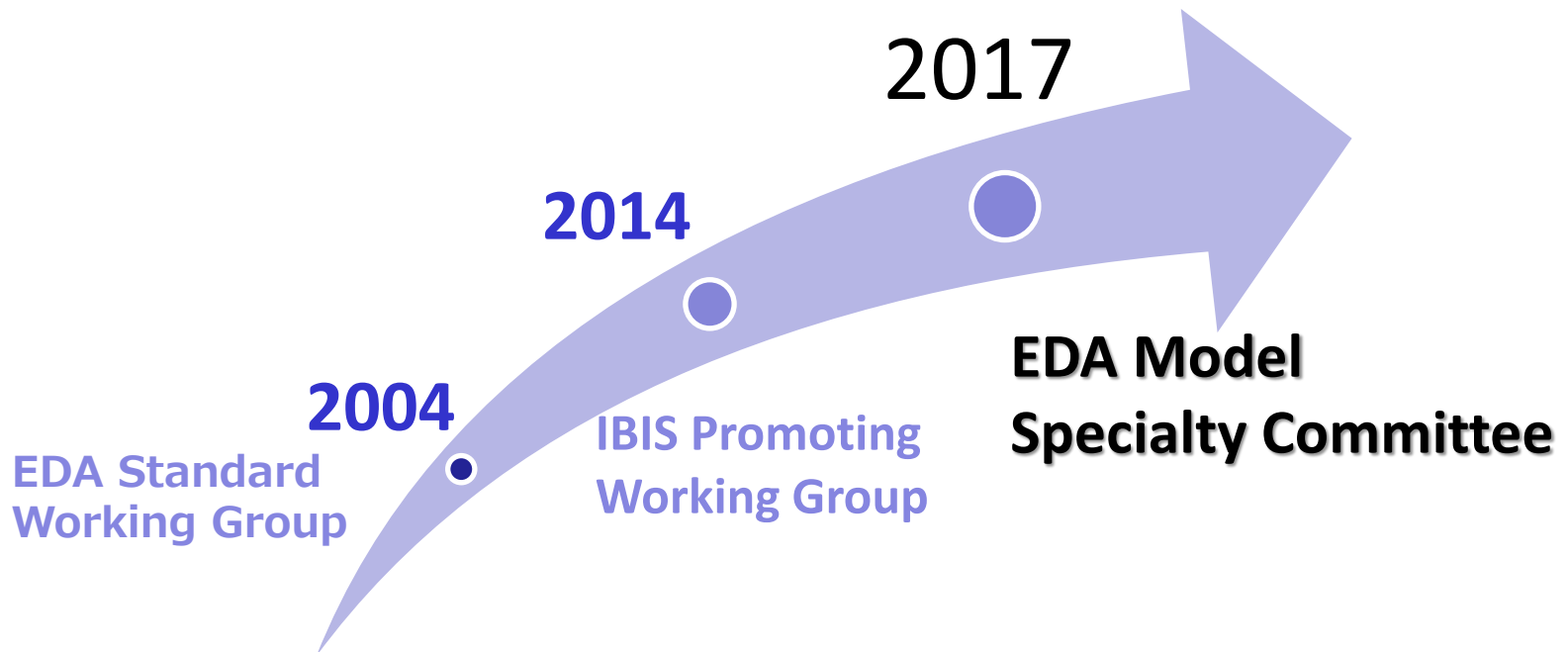


Agenda

- About JEITA EDA Model Specialty Committee
- Our Activities including IBIS Seminar
- Attendees Profiles of Today's Seminar

About JEITA EDA Model Specialty Committee

- EDA Model Specialty Committee started in May 2017
- We promote the use of EDA model (including IBIS model) and share information about these models.



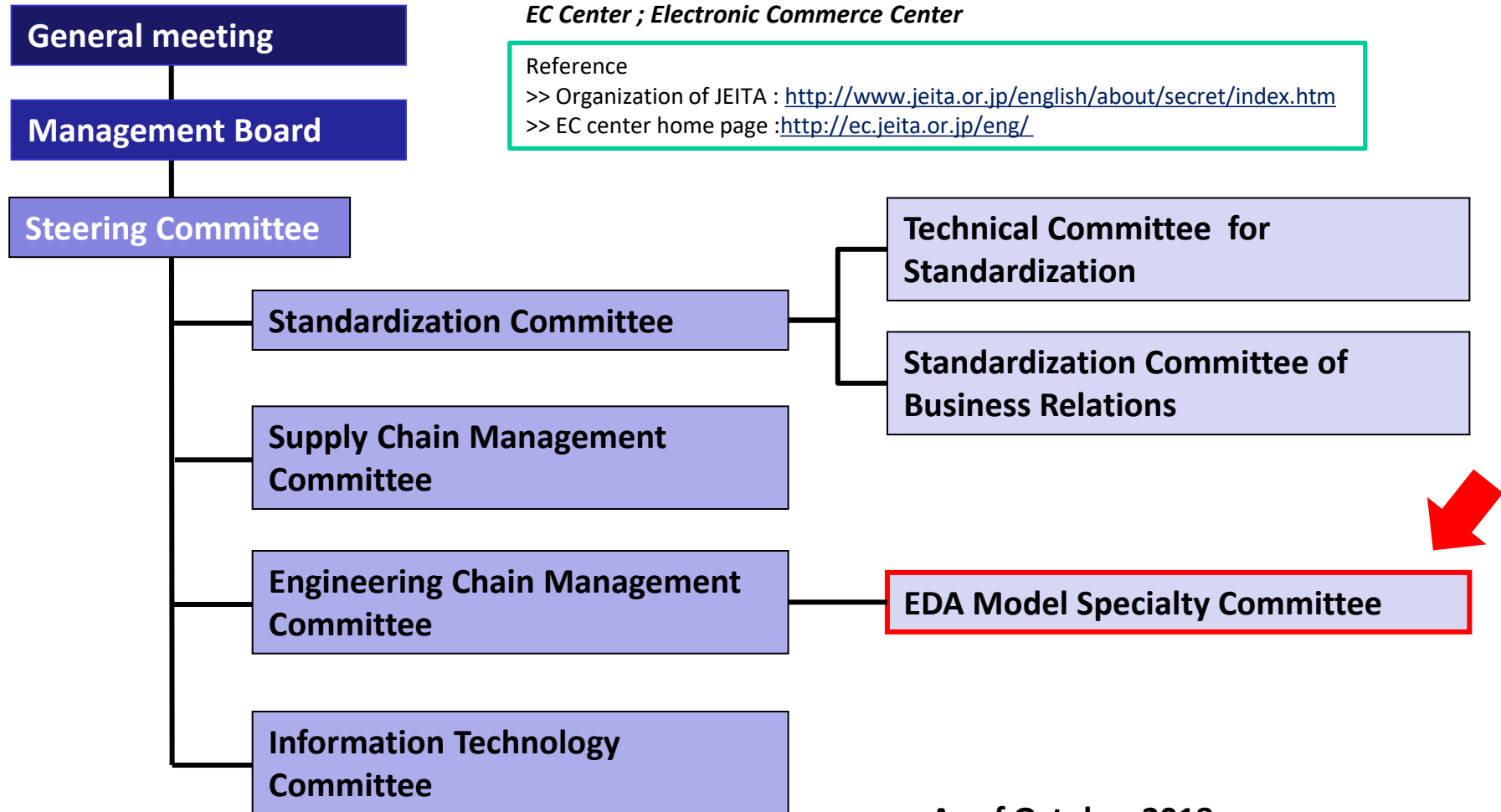
JEITA/EC Center Committee Organization

*JEITA ; Japan Electronics and Information Technology Industries Association
IBIS; I/O Buffer Information Specification
EC Center ; Electronic Commerce Center*

Reference

>> Organization of JEITA : <http://www.jeita.or.jp/english/about/secret/index.htm>

>> EC center home page : <http://ec.jeita.or.jp/eng/>



As of October 2018

JEITA EDA Model Specialty Committee : New Activity

- Focus on EDA model in addition to IBIS model
 - 6th JEITA IBIS free seminar
 - Invited lecture by passive component vendor
 - Overview and Application of Passive Component Dynamic Model (Murata Manufacturing Co., Ltd.)
 - 7th JEITA IBIS free seminar
 - Basic Seminar focused on S-parameter
 - IBIS and Transmission line model
 - S-parameter and Signal Integrity
 - S-parameter treatment in simulation



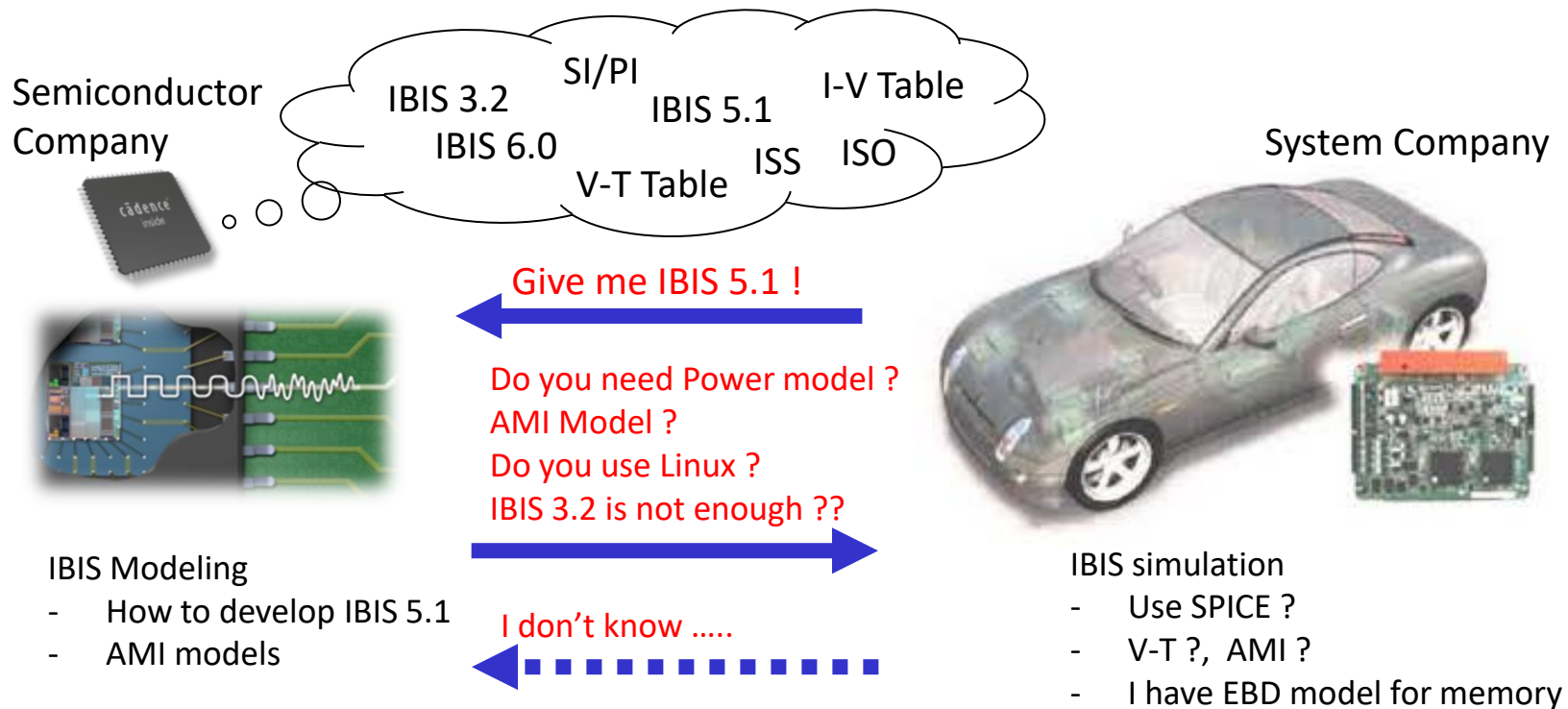
Our Activities in Detail

- EDA model (including IBIS model) promotion of utilization and technology exchange
 - Provide IBIS related informational in IBIS Seminar
 - Define IBIS simulation procedure guideline
 - Simulation Guideline for target topologies
 - Maintain IBIS Quality WG results
 - » IBIS Quality Framework Home Page
 - » JEITA Book: “SI Simulation Model Handbook”
- Asian IBIS Summit, Japan
 - Support IBIS Open Forum for all logistics
- Advanced IBIS technology guidance
 - Attending Design Con to obtain new info and seeing IBIS Open Forum Members

Objective: Let's Use IBIS Simulation

- Promoting IBIS simulation, for High-quality, Low cost and Fast delivery electronics product design

Example of IBIS issue



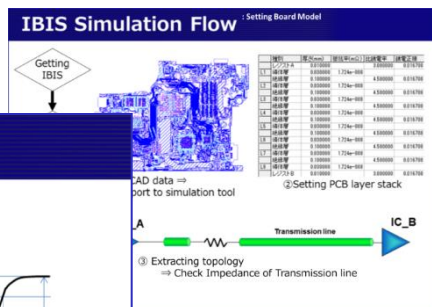
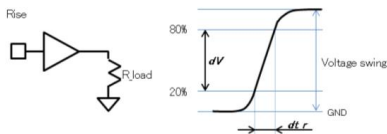
About IBIS Seminar

- IBIS free seminar is held from 2014
 - 7 (including today) seminars
 - 5 seminars in Tokyo / 2 seminars in Osaka
 - 512 (not including today) attendees
 - Past Theme
 - IBIS-AMI First Step, Power-Aware IBIS Basic

2.3.6 Ramp

■ Ramp dV/dt

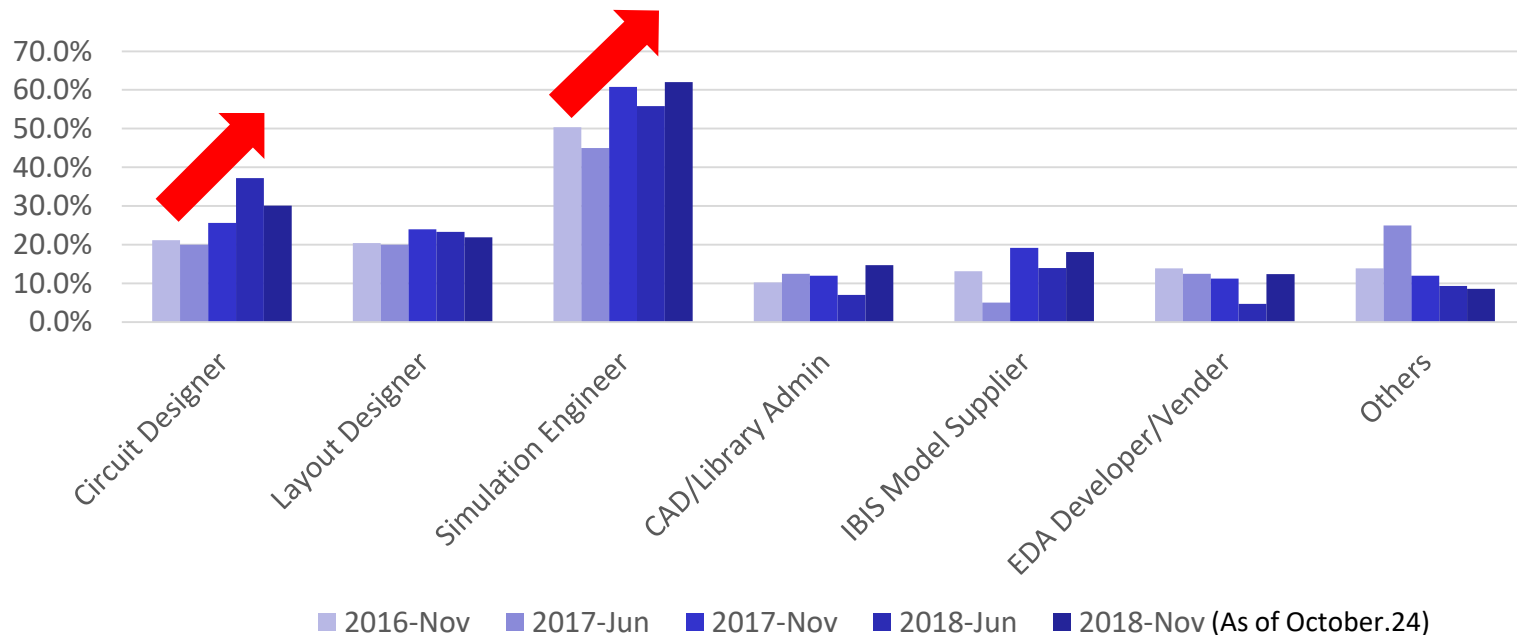
$$\frac{dV}{dt} = \frac{\text{20\% to 80\% Voltage swing}}{\text{time it takes to swing the above voltage}}$$



Attendees Profiles of Today's Summit

- Survey to understand needs of local IBIS users (in web entry)

Job (Marked all that apply)

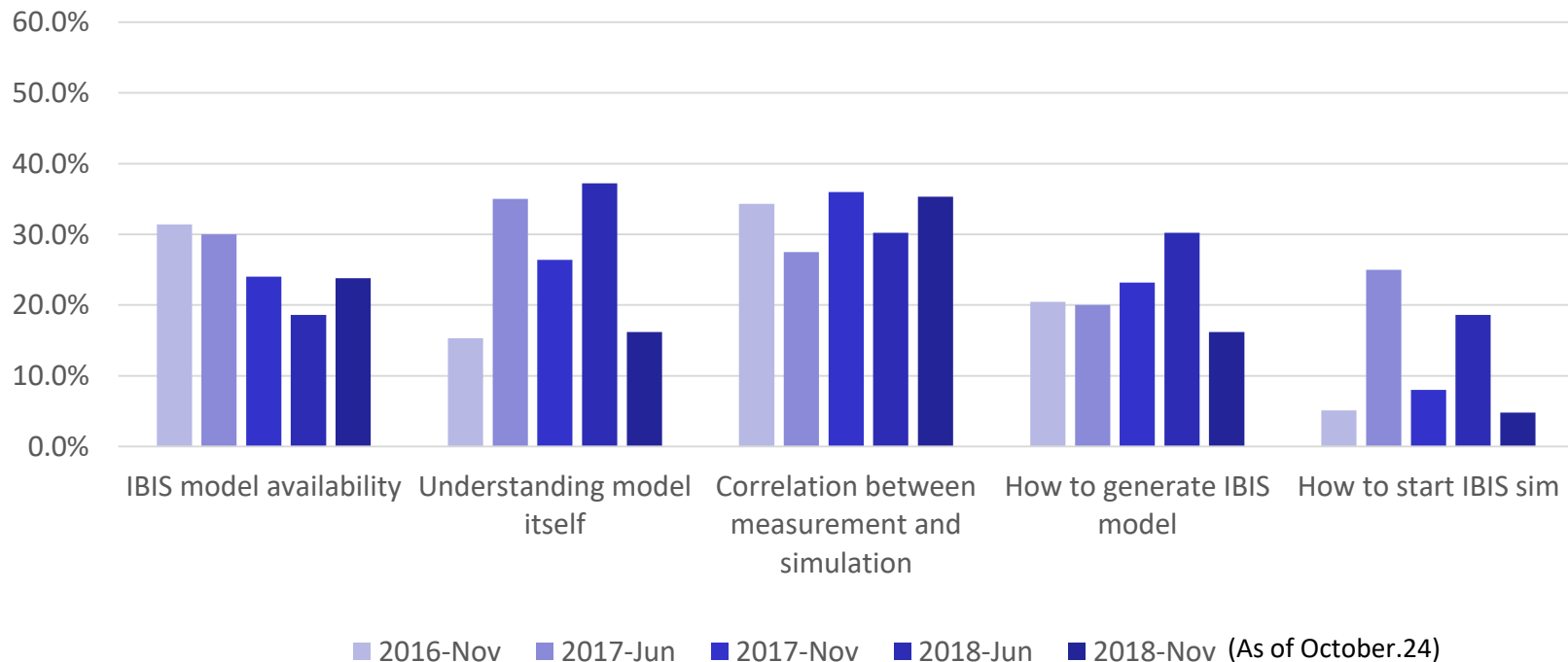


The percentages of Circuit Designers & Simulation Engineers tend to increase year by year.

Attendees Profiles of Today's Summit

- Survey to understand needs of local IBIS users (in web entry)

What are your issues about IBIS? (Marked all that apply)

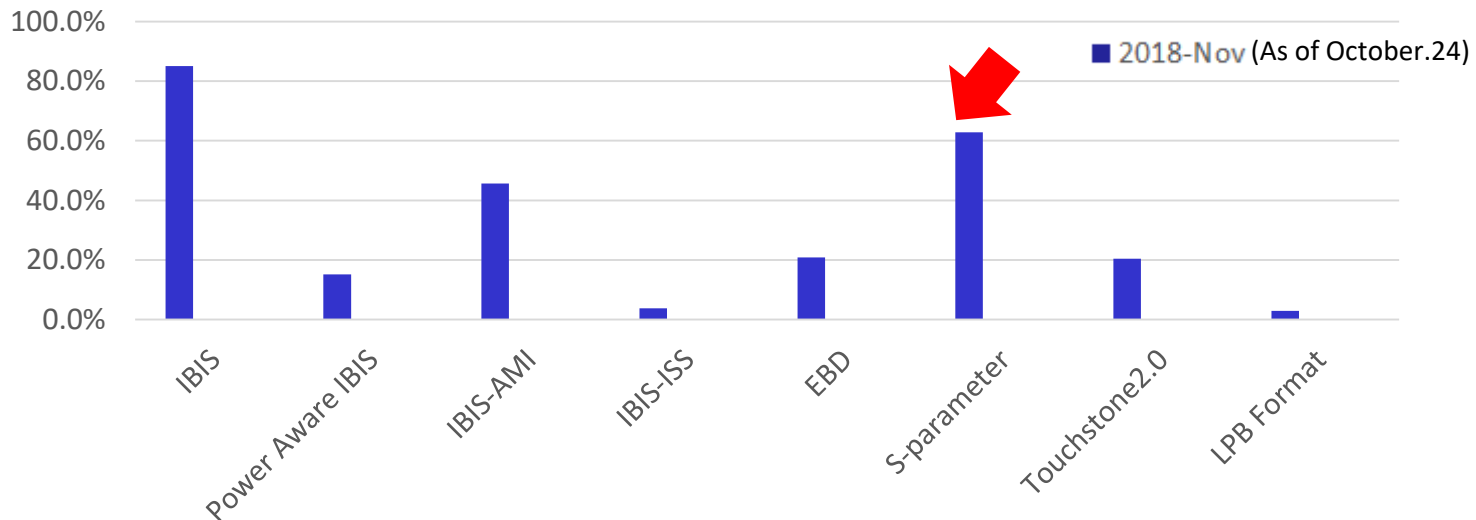


Model availability is still a major problem.

Attendees Profiles of Today's Summit

- Survey to understand needs of local IBIS users (in web entry)

Model experience in the past 3 years (Marked all that apply)



Not only IBIS but also S-parameters are used during a simulation.

Enjoy!